



TK International
020 7794 8700
www.t-k.co.uk

Residential Sales
Residential Lettings
Property Management

Sales Office:
9 Heath Street
Hampstead
London NW3 6TP
E: sales@t-k.co.uk

Lettings Office:
16-18 Heath Street
Hampstead
London NW3 6TE
E: lettings@t-k.co.uk

 [tkinternational](https://www.instagram.com/tkinternational)
 TK International
 TK International

Est.
1998



College Crescent Belsize Park NW3

A bright and immaculate interior designed 4 double bedroom garden apartment, situated within an attractive period building in Belsize Park, with an additional studio/bedroom in the rear garden.

This fine home features a stunning blend of modern interiors and period features, including beautifully detailed cornicing, two wood burning fireplaces, mood lighting, CAT6 cabling, underfloor heating throughout and bi-folding doors flush onto the rear garden from three rooms.

The kitchen features a granite worktop and Miele appliances, and the bathrooms have Hansgrohe fittings with thermostatic temperature controls, marble and mosaic tiling, and also featuring natural mother of pearl and silver leaf.

Accommodation:

Master Bedroom With Ensuite Bathroom, Three Further Double Bedrooms, Two Further Bathrooms (One Ensuite), Kitchen/Reception Room/Dining Room, Storage Room, Studio/Bedroom 4, Private Landscaped Front & Rear Garden.

EPC Rating: C

Tenant Fees Apply please see the Tenant Costs Guide on our website:

<http://www.t-k.co.uk/rent/tenants-charges>

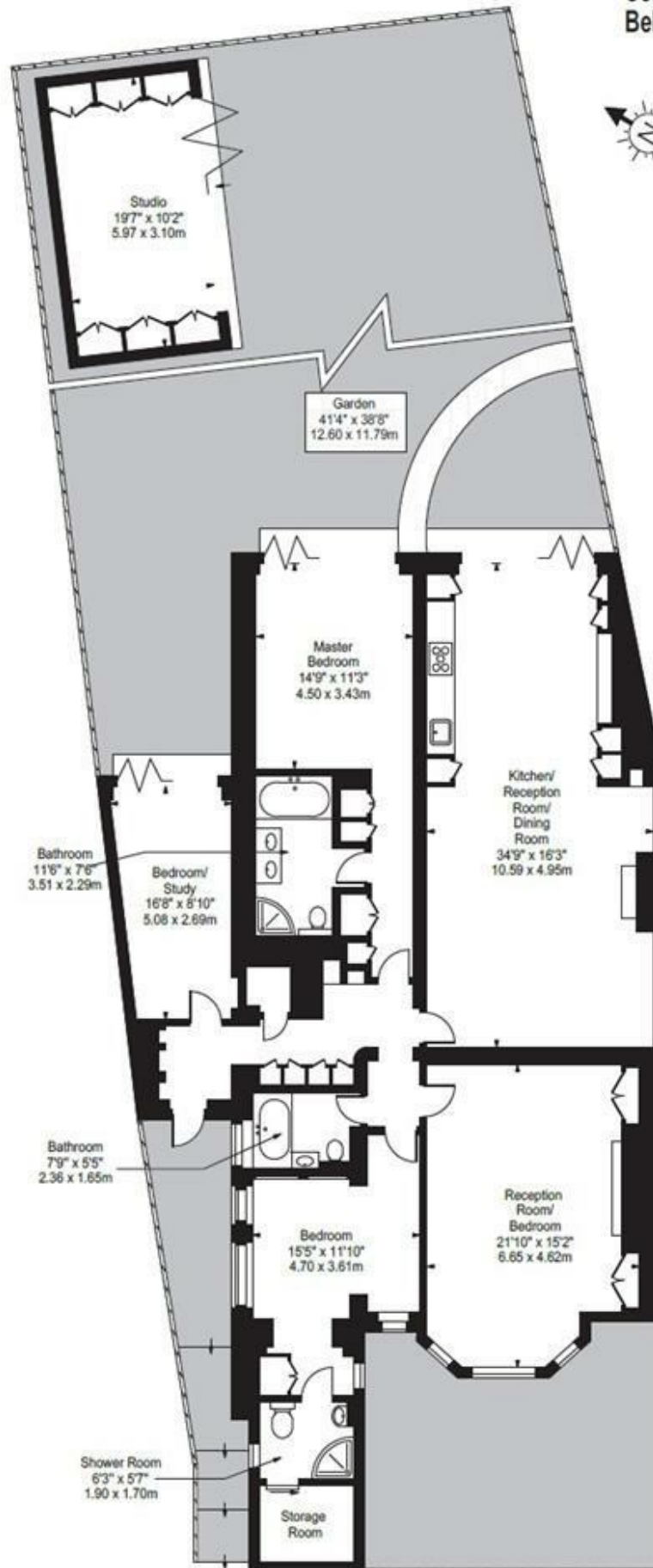
£1,600 Per Week

SOLE AGENT









Ground Floor

Approx Floor Area Including Studio 2045 Sq Ft - 189.98 Sq M

Approx Gross Internal Area 1845 Sq Ft - 171.62 Sq M